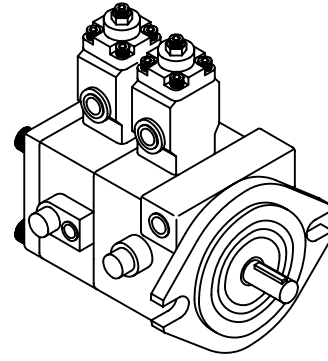
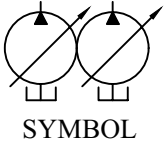


VPKCCF12.12  
VPKCCF15.15  
VPKCCF20.20



### ORDERING CODE 訂購指引

**VPKCC- F\*\*A\*A\*-01-A**

①

②③④

⑤

⑥

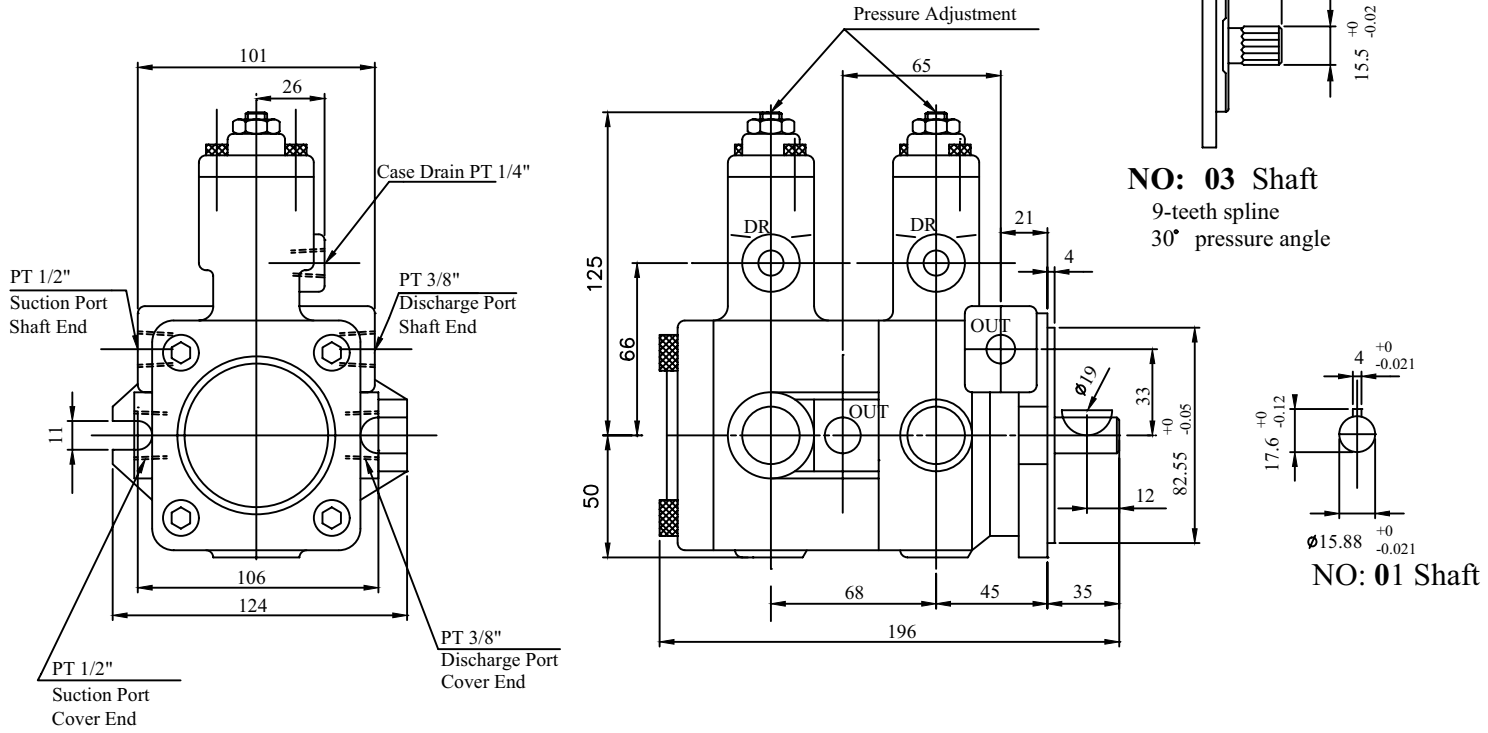
⑦

⑧

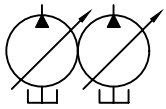
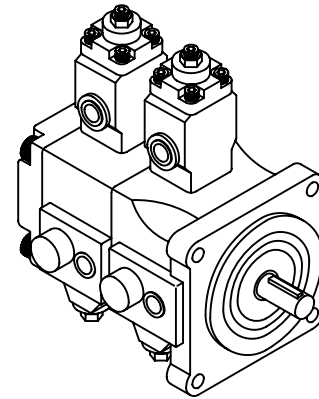
Net Weight:9.5Kg

- ①—— Series Number  
Double Pump
- ②—— Flange Type
- ③—— Output Flow  
Shaft End Pump at 1800rpm  
12,15,20 (ℓ /min)
- ④—— Output Flow  
Cover End Pump at 1800rpm  
12,15,20 (ℓ /min)
- ⑤—— Pressure Range  
of Shaft End Pump (P1)  
1:5-18    2:15-35  
3:30-55    4:50-70 (Kgf/cm<sup>2</sup>)
- ⑥—— Pressure Range  
of Cover End Pump (P2)  
1:5-18    2:15-35  
3:30-55    4:50-70 (Kgf/cm<sup>2</sup>)
- ⑦—— Shaft Type
- ⑧—— Type of Suction Port & Discharge Port  
A or No Marking: PT  
B: NPT  
C: SAE  
D: BSP

### VPKCCF2020



VPKCCF23.23  
VPKCCF26.26  
VPKCCF30.30  
VPKCCF40.40



SYMBOL

### ORDERING CODE 訂購指引

**VPKCC- F\*\*A\*A\*-01-A**

Net Weight: 16Kg

①      ②③④    ⑤    ⑥    ⑦    ⑧

- ① — Series Number  
Double Pump
- ② — Flange Type
- ③ — Output Flow  
Shaft End Pump at 1800rpm  
23,26,30,40 (ℓ/min)
- ④ — Output Flow  
Cover End Pump at 1800rpm  
23,26,30,40 (ℓ/min)
- ⑤ — Pressure Range  
of Shaft End Pump (P1)  
1:5-18    2:15-35  
3:30-55    4:50-70 (Kgf/cm<sup>2</sup>)
- ⑥ — Pressure Range  
of Cover End Pump (P2)  
1:5-18    2:15-35  
3:30-55    4:50-70 (Kgf/cm<sup>2</sup>)
- ⑦ — Shaft Type
- ⑧ — Type of Suction Port & Discharge Port  
A or No Marking: PT  
B: NPT  
C: SAE  
D: BSP

VPKCCF30.30

